

PRODUCT DATA SHEET

| | | | |
|---|-------------------------|-----------------|-------------|
| Title: Resistive Touch Panel Controller (4 wire and 5 wire combo USB or RS232 type) | Doc ID | Date 2015/12 | Ver. 3.3 |
| | Product TCA7S | | |

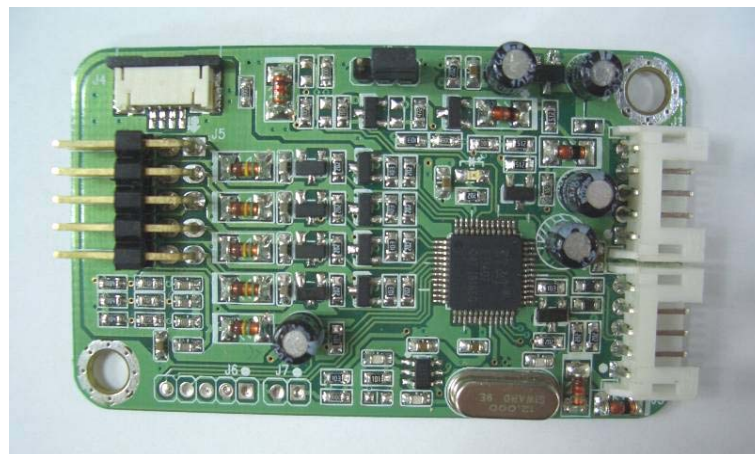
Description

TCA7S is a resistive touch panel controller for **USB** port or **RS232** port and is able to be used with **4-wire** or **5-wire** analog resistive panel. It is with drivers supporting many kinds of operation systems such as Windows, Linux and Macintosh.

Specification

| | |
|--------------------------------|--|
| Resolution : | 4096 x 4096 (ADC 12 bit) |
| Touch Panel : | 4-wire or 5-wire |
| Interface : | USB 1.1 or RS232 |
| LED : | Touch / un-touch indication |
| Power : | Derived from USB or PS2 port |
| Power consumption : | USB 30mA / 5V typical RS232 35mA / 5V typical |
| Respond time : | 12.5ms (80 rps) |
| Dimension : | PCB 60 x 35 mm |
| Connector Type : | Wafer / FPC / Pin Header |
| Operation Temperature : | -40°C ~ 85°C |
| Storage Temperature : | -40°C ~ 105°C |
| Regulatory Approvals : | CE,FCC,BSMI |

Figure : Photo of controller board:



PRODUCT DATA SHEET

| | | | |
|---|-------------------------|-----------------|-------------|
| Title: Resistive Touch Panel Controller (4 wire and 5 wire combo USB or RS232 type) | Doc ID | Date 2015/12 | Ver. 3.3 |
| | Product TCA7S | | |

Interface Specifications

Interface for Host side :

J1 : For RS232 connector

2.00mm Wafer 90° Type

| Pin No. | Specifications |
|---------|----------------|
| 1 | TXD |
| 2 | RXD |
| 3 | VCC |
| 4 | RTS |
| 5 | GND |

J3 : For USB connector

2.00mm Wafer 90° Type

| Pin No. | Specifications |
|---------|----------------|
| 1 | VCC |
| 2 | D- |
| 3 | D+ |
| 4 | GND |
| 5 | Frame Ground |

Interface for Touch Panel side :

J5 : For 5 wire panel connector

2.54mm Pin Header Double Rows 90° Type

| Pin No. | Specifications |
|---------|----------------|
| 1 | Lower Left |
| 3 | Upper Left |
| 5 | Top Sheet |
| 7 | Lower Right |
| 9 | Upper Right |

J5/J4 : For 4 wire panel connector

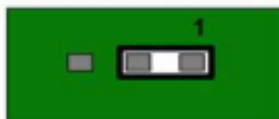
(J5) 2.54mm Pin Header Double Rows 90° Type

(J4) 1.00mm FPC SMD Side Entry Type

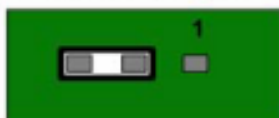
| (J5)Pin No. | (J4)Pin No. | Specifications |
|-------------|-------------|----------------|
| 2 | 1 | Left |
| 4 | 2 | Right |
| 6 | 3 | Lower |
| 8 | 4 | Upper |

J8 : For choose touch function Jump (1.0mm)

J8.1 and J8.2 short choose 5wire function



J8.2 and J8.3 short choose 4wire function



PRODUCT DATA SHEET

| | | | |
|---|-------------------------|-----------------|-------------|
| Title: Resistive Touch Panel Controller (4 wire and 5 wire combo USB or RS232 type) | Doc ID | Date 2015/12 | Ver. 3.3 |
| | Product TCA7S | | |

Figure : Size of controller board

