

PRODUCT DATA SHEET

Title: Resistive Touch Panel Controller (4 wire RS232 type)	Doc ID	Date 2011/03	Ver. 3.1
	Product TC42P		

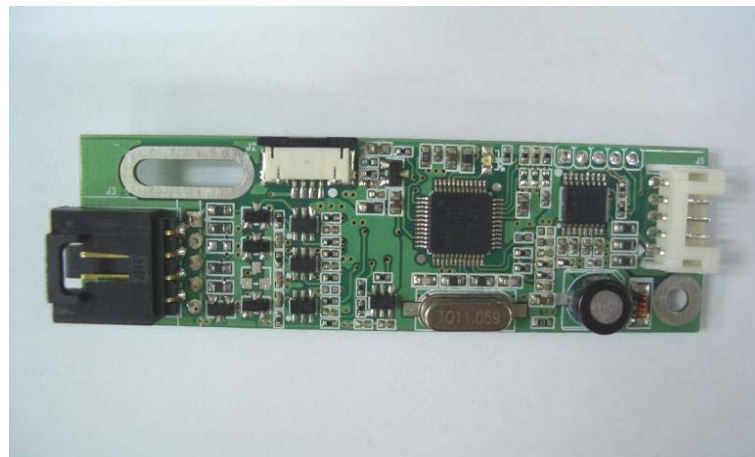
Description

TC42P is a resistive touch panel controller for **RS232** port and is able to be used with **4-wire** analog resistive panel. It is with drivers supporting many kinds of operation systems such as Windows, Linux and Macintosh.

Specification

Resolution :	4096 x 4096 (ADC 12 bit)
Touch Panel :	4-wire
Interface :	RS232
LED :	Touch / un-touch indication
Power :	Derived form PS2 port
Power consumption :	35mA / 5V typical
Respond time :	7.2ms (140 rps)
Dimension :	PCB 73 x 22 mm
Connector Type :	Wafer / Shrouded Header / FPC
Operation Temperature :	-20°C ~ 80°C
Storage Temperature :	-40°C ~ 125°C
Regulatory Approvals :	CE,FCC,BSMI

Figure : Photo of controller board:



PRODUCT DATA SHEET

Title: Resistive Touch Panel Controller (4 wire RS232 type)	Doc ID	Date 2011/03	Ver. 3.1
	Product TC42P		

Interface Specifications

Interface for Host side :

J1 : For RS232 connector

2.00mm Wafer 90° Type

Pin No.	Specifications
1	TXD
2	RXD
3	VCC
4	RTS
5	GND

Interface for Touch Panel side :

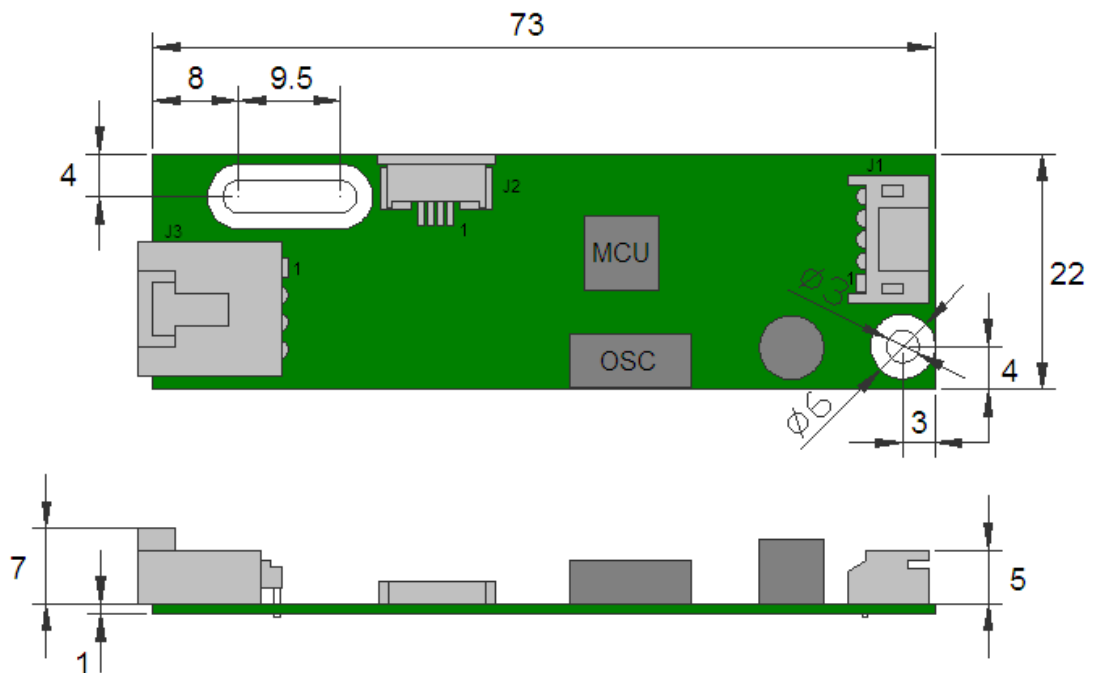
J2/J3 : For Panel connector

(J2) 1.00mm FPC SMD Side Entry Type

(J3) 2.54mm Shrouded Header 90° Type

Pin No.	Specifications
1	Right
2	Lower
3	Left
4	Upper

Figure : Size of controller board



Unit : mm